



DevOps vs SRE

Continuous Delivery Pipelines
Bridging the Gap

Ravi Lachhman
Evangelist
Harness.io
@rivilach
Ravi.Lachhman@Harness.io

Agenda

- DevOps and/or vs SRE?
- Action favors the bold or prepared?
- Eventually you must pull the trigger...



Ravi Lachhman

Evangelist

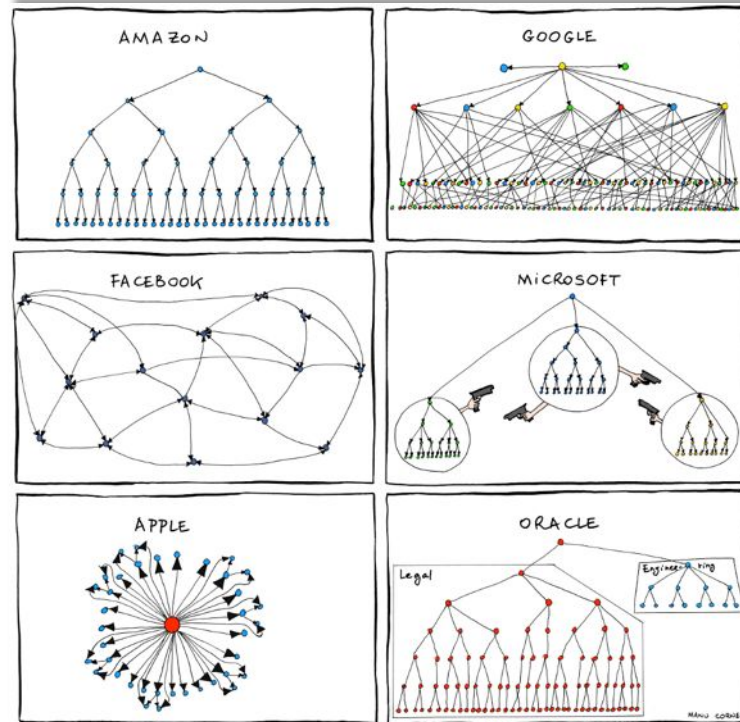
[@ravilach](#)

Ravi Lachhman is an evangelist at Harness. Prior to Harness, Ravi was an evangelist at AppDynamics. Ravi has held various sales and engineering roles at Mesosphere, Red Hat, and IBM helping commercial and federal clients build the next generation of distributed systems. Ravi enjoys traveling the world with his stomach and is obsessed with Korean BBQ.

Enabling Efficiency and Resiliency



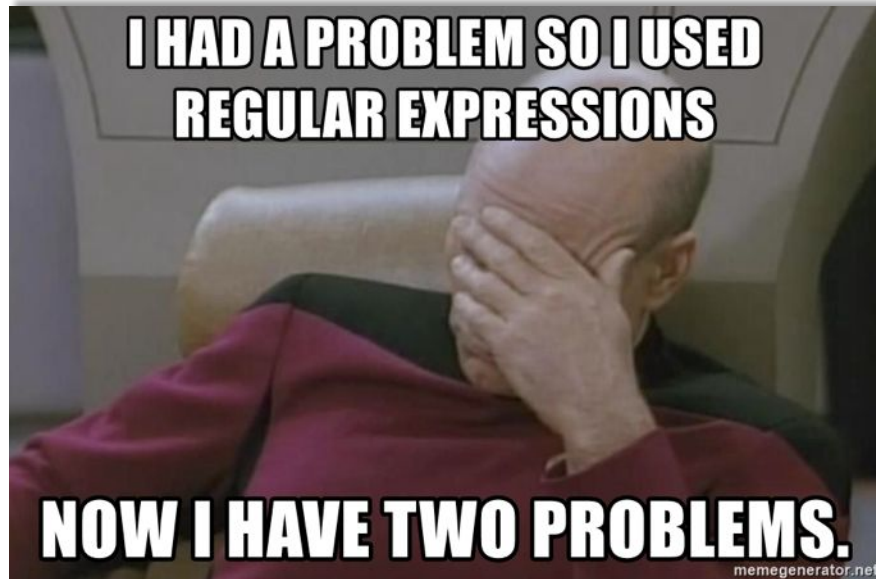
Conway's Law



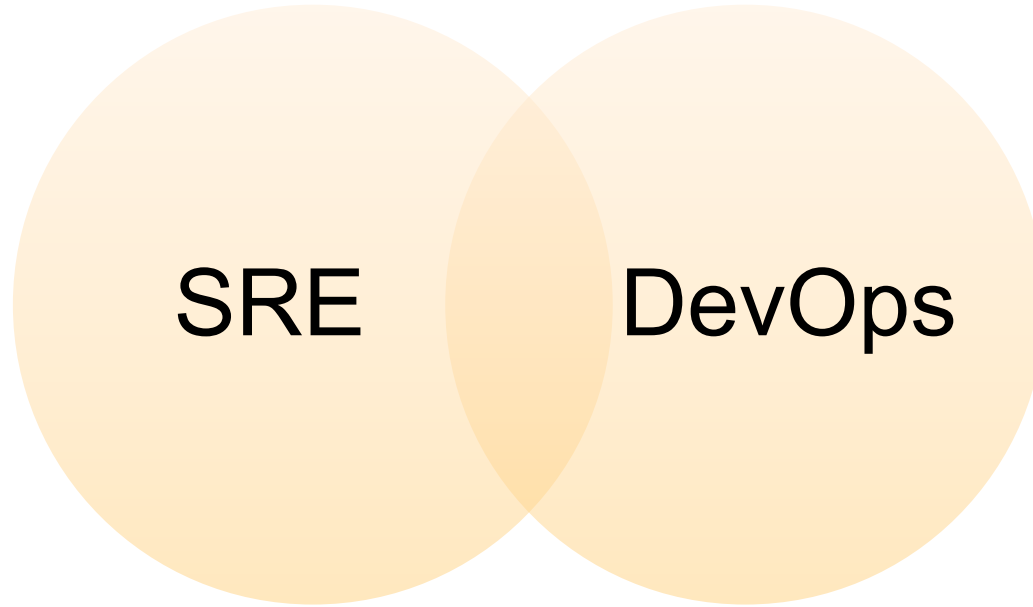
Two Different Goals



Two Different Problem Sets



Comparisons, in a 6 Round Battle



Round I, tl;dr

SRE

Resilience,
Scaling,
Uptime,
Robustness

DevOps

Development
Pipelines

Round II, Does the App Cluster?

SRE

RAFT
based
leader with
Zookeeper
and Mesos

DevOps

Yes, we
need three
nodes

Round III, Can We Have Monitoring?

SRE

BlackBox
vs
WhiteBox

DevOps

Yes,
Prometheus,
ELK, FluentD

Round IV, Our Deployment Failed

SRE

Did it cause
an incident?

DevOps

Re-run the
pipeline and
we can up
the logging.

Round V, Typical Metrics

SRE

Error
budgets,
SLOs, SLIs

DevOps

Deployment
frequency,
deployment
failure rate

Round VI, War Chant

SRE

No Root
Cause!

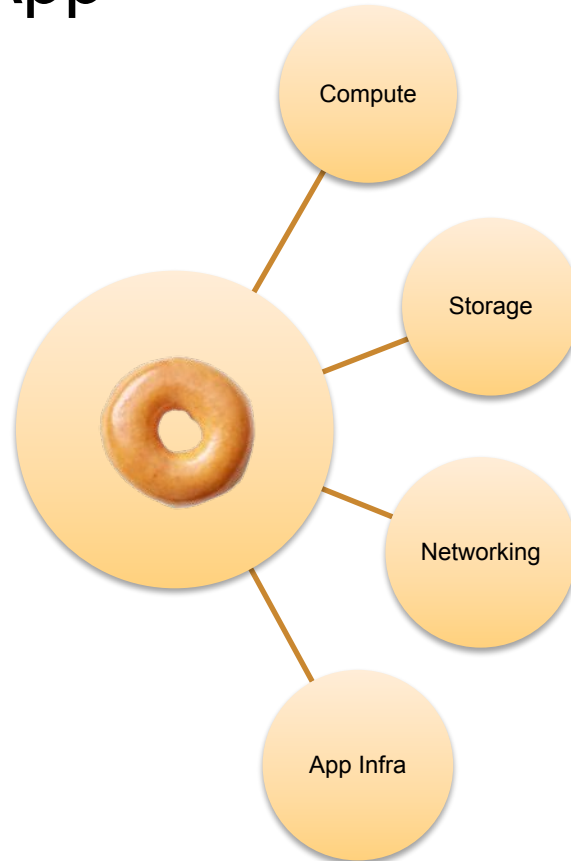
DevOps

People,
Process,
Technology!

Eventually You Have to do Something



Dimensions of an App



How do you Deploy?

```
#!/bin/sh  
#!/bin/bash  
#!/usr/bin/env python3
```


Pipelines, in Good and in Incident

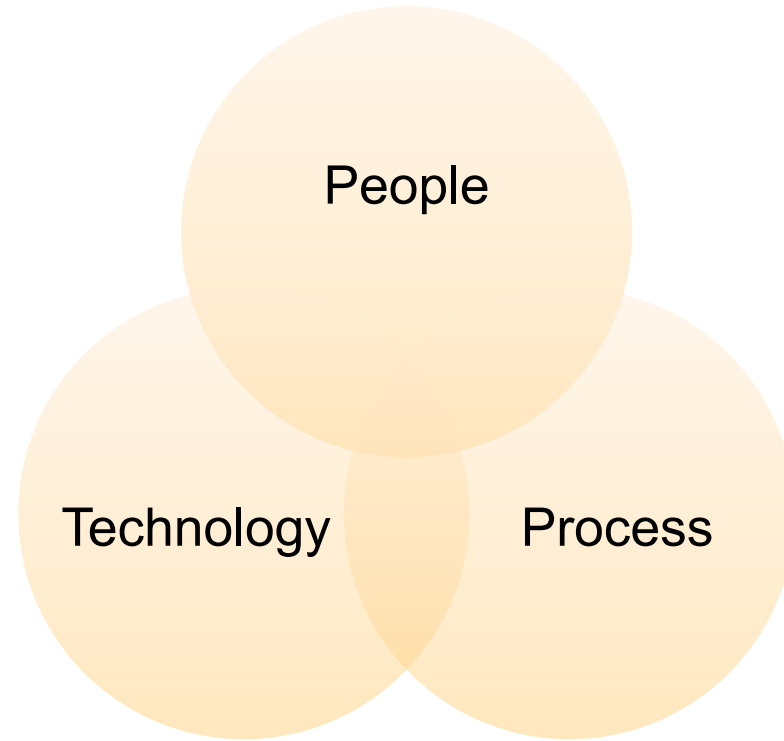


Deploying During an Incident



Deploying New Feature

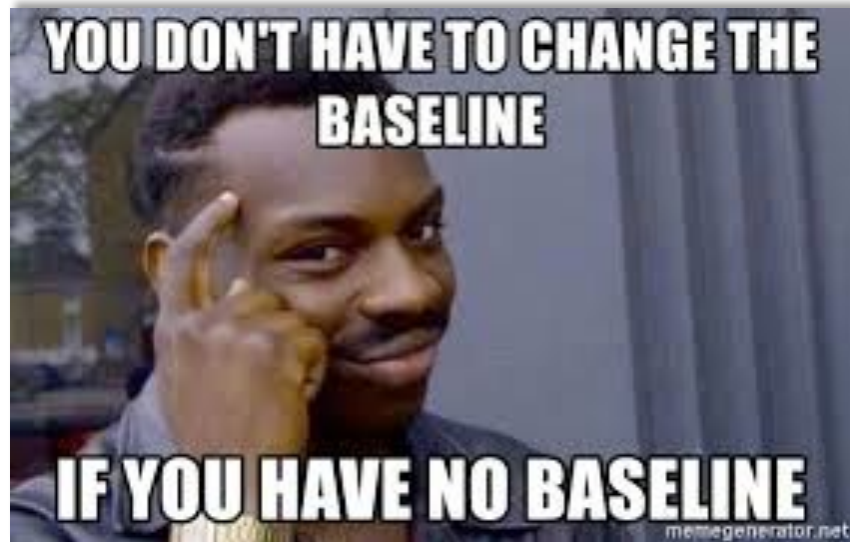
Confidence is Always Needed



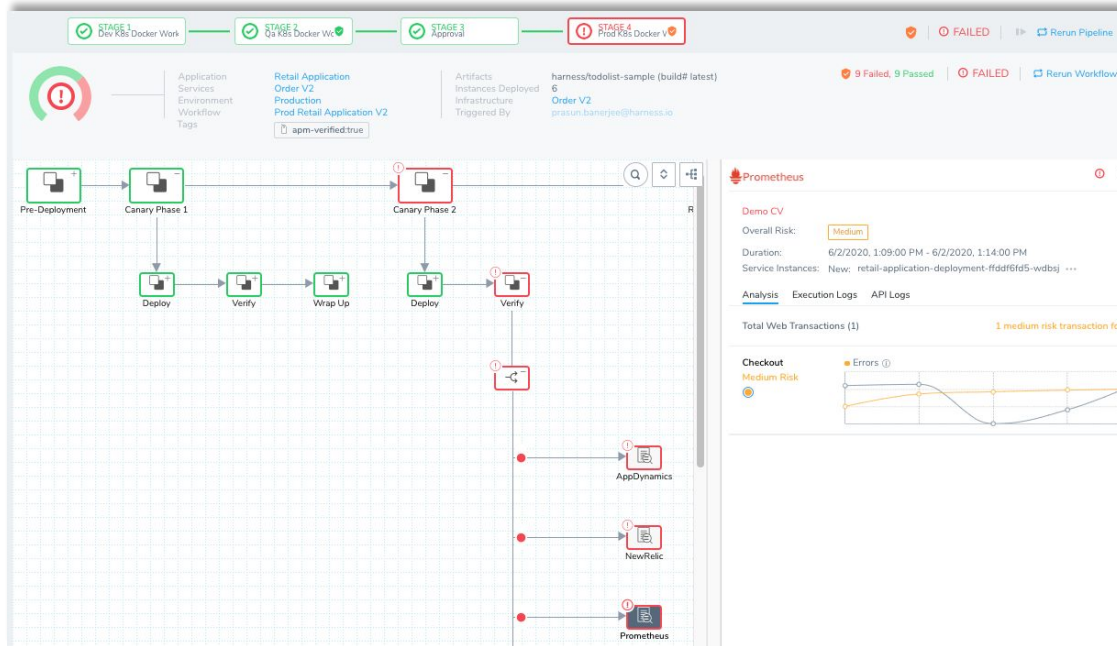
Being Prepared to Take Action



What is Normal?

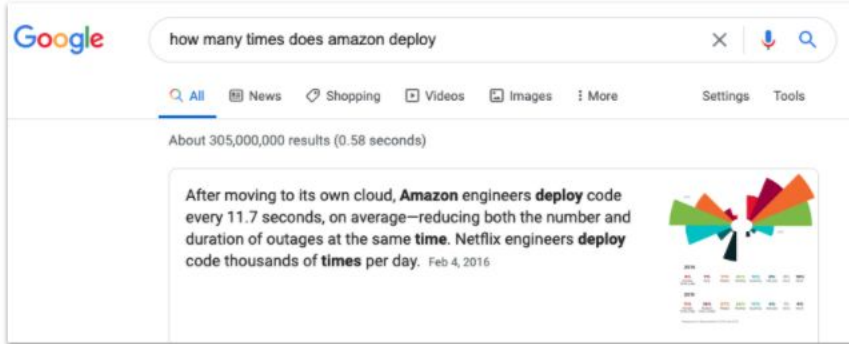
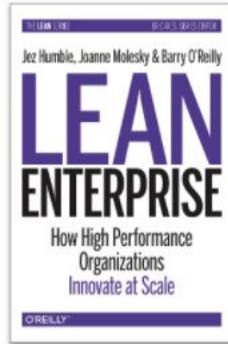


Continuous Delivery Pipelines



The Linux Foundation - CDF

How much should you Deploy?



THANK YOU!

Meet me in the Network
Chat Lounge for questions