



# SRE For Enterprise-Scaled

And SRE's importance

Dinesh Sekar

SRE Evangelist & Transformation

**in** sekardinesh

# Agenda

---

Enterprise-scaled organizations; the older the organization is, the older the systems, process, culture are...

## “Change is the only constant”

- Does this axiom hold true for enterprise-scaled?
- What are some challenges they face?
- Why it is important for enterprise-scaled to adopt SRE? and
- How to go about it.



Dinesh Kumar Sekar

## SRE Transformation & Competency Development

- Core SRE Transformation Management
- Driving SRE adopting across systems and teams
- Up-skill, re-skill and re-purpose teams aligning to SREs practices

# Many org. are NOT Google

“It is a truth universally acknowledged that systems do not run themselves.  
How, then, should a system—particularly a complex computing system  
that operates at a large scale—be run?”

*It's all well and good to be inspired by core technology serviced organizations!!!*

*Many enterprise-scaled organizations are NOT GOOGLE !*

*“Hope is not a strategy”*

# Few Challenges Faced By Enterprise-scaled

- Legacy environments and /or systems.
- Majority of systems have low DevOps CI/CD maturity.
- Workforce, Silo organization structure and silo culture (~~“you build it, you run it”~~)
- Workforce and upskilling / repurposing (*e.g: operations adopting engineering*)
- Workforce and more workforce to handle more incidents
- Legacy processes and controls (*e.g: ops cannot touch codes*)
- Buy-in from stakeholders on ‘Error-Budget’

# What then..?

- Modernizing critical legacy applications is hard...
- Adopting SRE principles and practices is hard...

## But...

- Glassdoor on SRE - > 54,000 open positions (8<sup>th</sup> June). Both from tech firms (GitHub, Spotify, Apple) and non-tech companies (GE, Chase, Walmart, etc., )

## WHY ?

*May be.. Every other organization wants to be like Amazon. Would you like to be?*

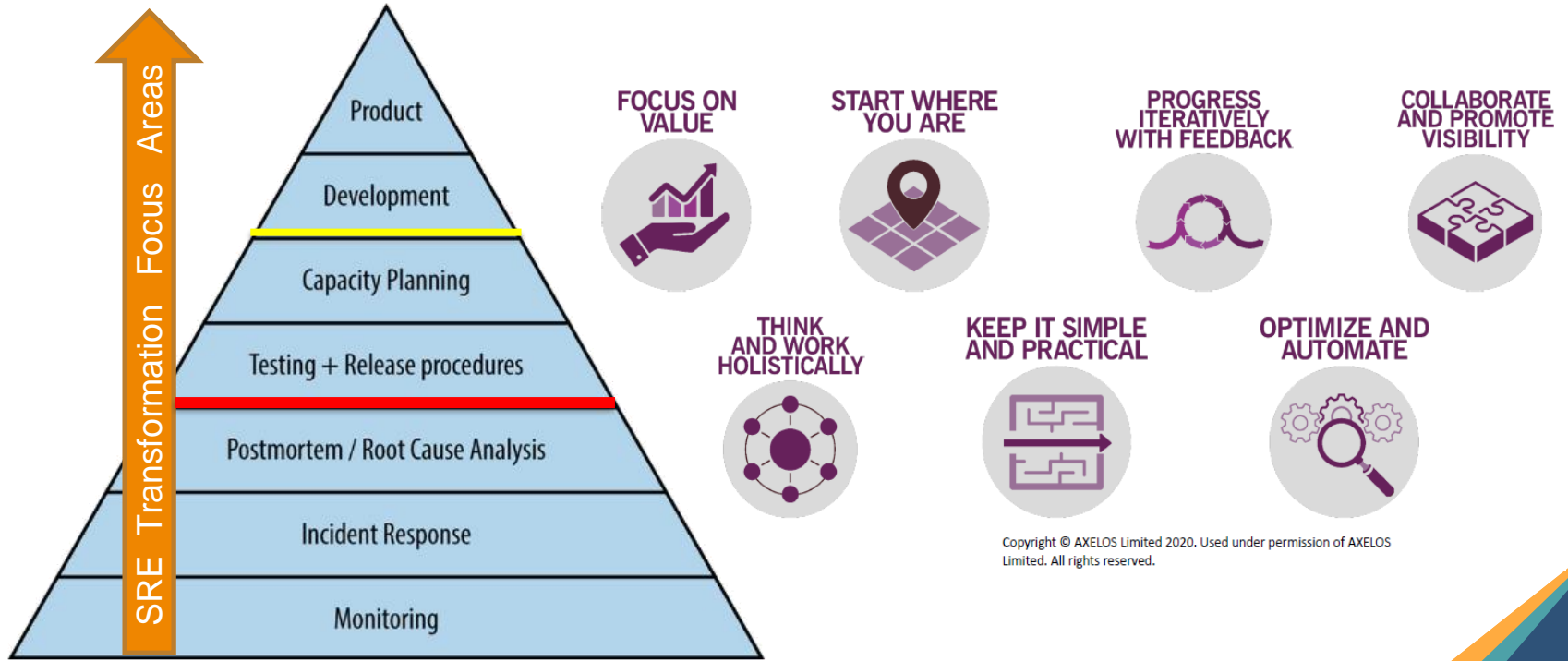
*(avg. deployment rate of 11.6 seconds with >1000 deployments / hour)*

# The Big Question...

**How could** an enterprise-scaled organization adopt SRE?

**How could we** integrate the SRE discipline into  
existing enterprise-scaled?

# ITIL4 – Guiding Principles for SRE



Copyright © AXELOS Limited 2020. Used under permission of AXELOS Limited. All rights reserved.

# Benefits SRE Delivers...

Challenges as discussed earlier	Benefits SRE delivers
Legacy environments and /or systems.	SRE inherently encourages a culture and adoption of DevOps
Majority of systems have low DevOps CI/CD maturity.	
Workforce, Silo organization structure and silo culture ( <del>“you build it, you run it”</del> )	Shared objectives – Improved reliability, automation where possible, MTTR and etc.
Workforce and upskilling / repurposing ( <i>e.g: operations adopting engineering</i> )	SRE teams to embrace engineering skillset and operational mindset.
Workforce and more workforce to handle more incidents	
Legacy processes and controls ( <i>e.g: ops cannot touch codes</i> )	KISS - Keep it simple and <del>practical</del> stupid.
Buy-in from stakeholders on ‘Error-Budget’	Business realized value will automate buy-in



# THANK YOU!

Meet me in the Network  
Chat Lounge for questions